

ALUMINIUM BUILDING SYSTEMS

Nordic Aluminium Plc



ARCHITECTURAL SYSTEMS

Nordic Aluminium's architectural systems have been designed to withstand the rigors of northern climates based on continuous product development and over 35 years of experience. They are technically high-quality products manufactured in Finland. Nordic Aluminium's architectural systems are extremely versatile and have a wide range of applications. Different systems can be combined and when necessary supplemented with new profiles. All systems include durable and weathertight EPDM rubber seals and all insulated profiles have efficient thermal breaks.

Aluminium

Aluminium is a rigid, corrosion-resistant and recyclable metal that can be easily extruded into functionally appropriate profiles. Nordic Aluminium's architectural profiles are generally manufactured from AW-6060-T6 alloy with a yield strength of $R_{p0.2} = 150 \text{ N/mm}^2$. The rigid material makes construction lightweight and durable.

Anodisation

Anodisation is a surface treatment for aluminium that protects it from coastal and industrial climates. All alternatives, the natural-coloured EN 000 and the coloured series EK 22...44, resist weather sunlight and UV radiation.

Painting

Nordic Aluminium's architectural systems can be powder painted to the desired colour shade. Aluminium will not rust even if coatings are damaged or the profiles are shaped.

Decoral coating

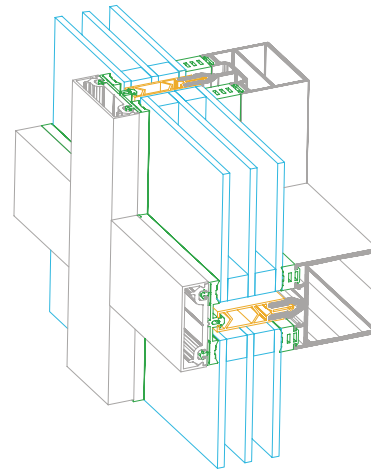
Decorative aluminium profiles, durable and fully capable of withstanding UV radiation, can be implemented as desired to achieve a lively appearance. The theme can be any photographable surface, such as wood, stone, leather or even a computer-generated pattern.



R54

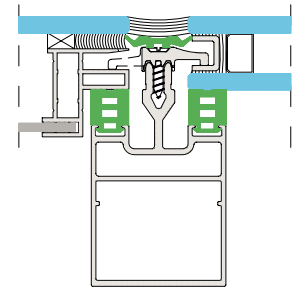
Thermally insulated glass facades, glass roofs and partition walls

- frame profile width 50 mm
- frame profile depths 8.5...200 mm
- 90° and 135° corners and curved walls
- covers 15...200 mm high, many special covers
- condensate channels
- frame profiles with butt joint or lap joint technology
- exterior sealing also with wide gaskets
- operable sections from R72 Termo system
- glazing from exterior
- glazing single, double and triple glazing as well as with facade glazing or solid fill

**R54SG**

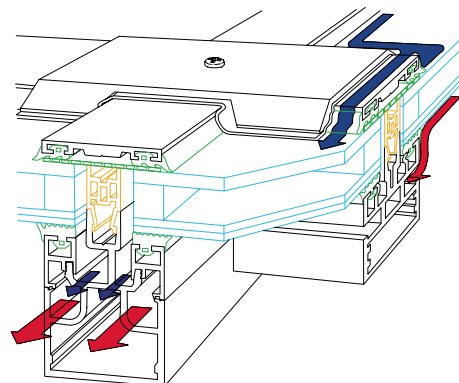
Glass facades without mouldings

- 2- or 4-sided
- glazing attachment mechanically
- double glazing as well as facade glazing

**R53 VERTEX**

Thermally insulated glass roofs: flat, pyramids, barrel vaults

- frame profile width 50 mm
- profile depth 40...180 mm
- glazing bead 5 mm high
- condensate channels
- modules for ventilators and smoke vents
- glazing from exterior
- double or triple glazing



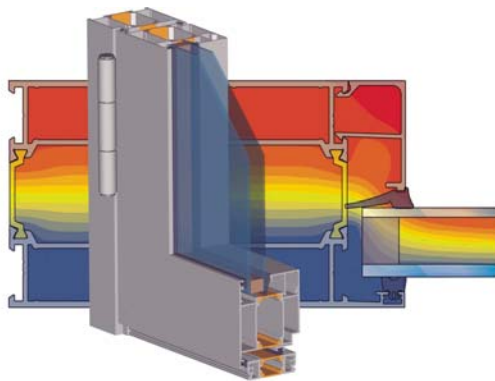
R72 TERMO

Thermally insulated doors, windows and glass walls

- excellent thermal insulation capacity
- Termo + additional insulation gives U_f value of $1.5 \text{ W/m}^2 \cdot \text{K}$
- gaskets do not obstruct light opening
- structurally easy-to-build solutions
- profile depth 72 mm
- same rabbet and glazing beads in doors and windows
- gaskets continuous over corners
- connections by corner pressing or screws
- possibility for use in curved or segmented construction (bendable profiles)
- compatible with other Nordic Aluminium architectural systems

Doors

- door and double door, inward and outward swinging
- sliding doors
- electrical locks' cabling easy
- double and triple glazing alternatives
- butt hinge



Windows

- inward and outward opening windows
- sliding windows for terraces
- SG window
- double window without a middle
- double and triple glazing alternatives
- concealed hinges for windows



R12

Non-insulated doors, windows and walls

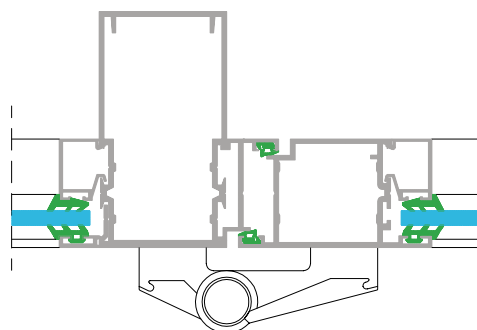
- frame profile width 59...88 mm
- profile depth 46 or 100 mm
- 90° and 135° corners
- frame and sash flush on exterior surface
- glazing in centre or on inside
- single glazing, double glazing or solid fill

Doors

- hinged or sliding doors
- safety door
- automatic machinery or explosive panic bolts
- floor closers

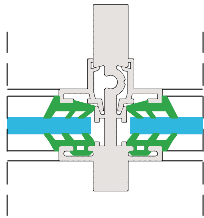
Windows

- side, under, or side-under hinged



R12E30

Type-approved, STF E30-class compartmented door



R12 LINEA

Thin-lined glass wall system

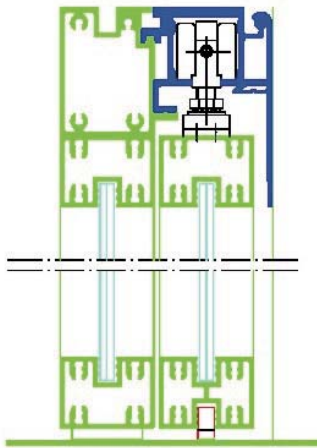
- frame profile width 36 mm
- profile depth 46 or 65 mm
- can be used with R12 system
- glazing: glass 3...12 mm or solid fill 3...16 mm

Doors

- door for light traffic

Windows

- hinged window, or sliding hatch on tracks above or below



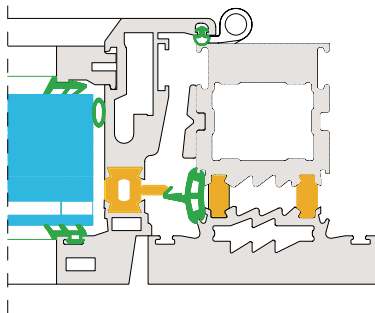
R28 FILIA

Sliding doors and walls

- frame profile width 30 or 85 mm
- profile depth 40 mm
- glass 5 or 6 mm

Doors

- sliding door with overhead track



R65 BULLET PROOF

- solid aluminium bullet-proof construction insulated or non-insulated for facades windows and doors
- frame profile width 95 mm
- profile depth 100 mm
- construction has been granted GOSTROI certificate
- construction able to stop rifle- and pistol-calibre ammunition
- glazing alternatives for different kinds of bulletproof glass

FURTHER INFORMATION

Architectural systems have been thoroughly presented in a binder available from Nordic Aluminium as well as in CD-ROM format and in Internet.

Nordic Aluminium Plc's Design Service will provide information about applications and special solutions.

MANUFACTURING, SALES AND INFORMATION

Nordic Aluminium Plc
P.O. Box 117
FI-02401 Kirkkonummi, Finland
Tel. +358 (0)9 68 251
Fax +358 (0)9 298 2147
www.nordicaluminium.fi

WAREHOUSE SALES

Onninen Ltd
Industrial wholesaling
Mittalinja 1 (P.O. Box 109)
FI-01260 Vantaa, Finland (FI-01301 Vantaa)
Tel. +358 (0)204 855 111
Fax +358 (0)204 855 530

NORDIC ALUMINIUM



onninen